

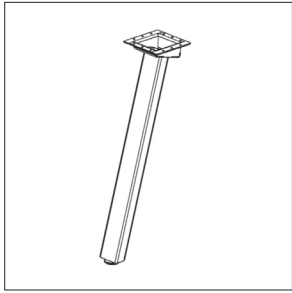
Sawhorse

CONFERENCE TABLES

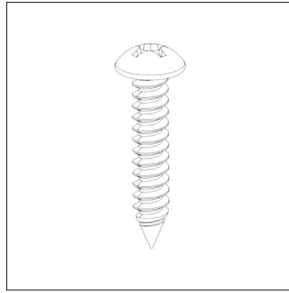


1 – Included Parts and Fasteners

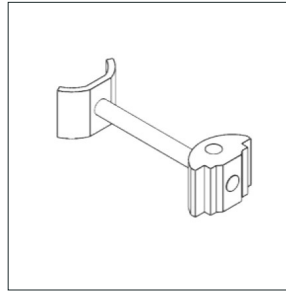
ENWORK



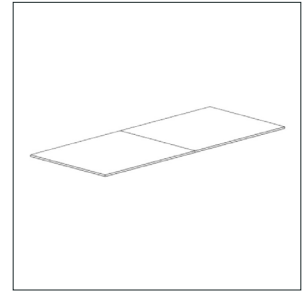
Sawhorse Legs



#10 x 1" Panhead Phillips

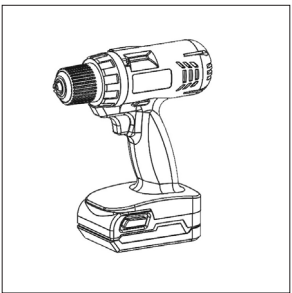


Tight Joint

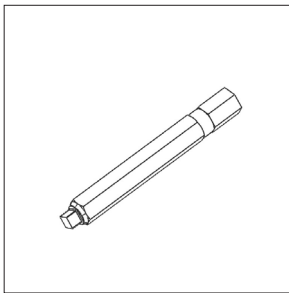


Multi Piece Work Surface

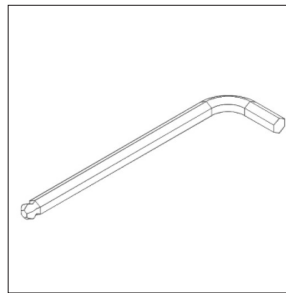
2 – Tools and Supplies Required



Drill

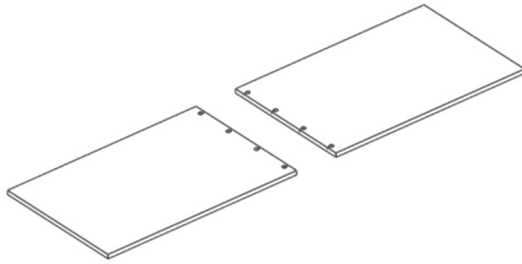


Square Driver Bit



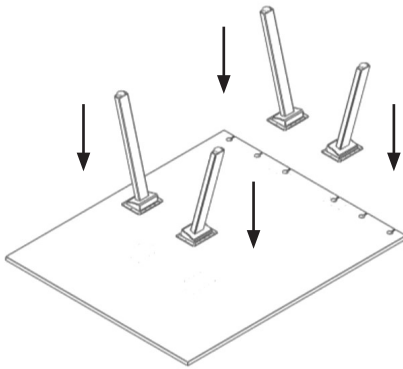
5mm Allen Wrench

Figure 3.1



- 1 Lay tops face down on a non marring surface.

Figure 3.2



- 2 Attach 4 Saw Horse Legs to 1 of the work surfaces using the leg predrilled holes and the provided #10 x 1" screws.

Note: the leg plates will overhang the work surface edge.

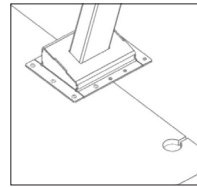
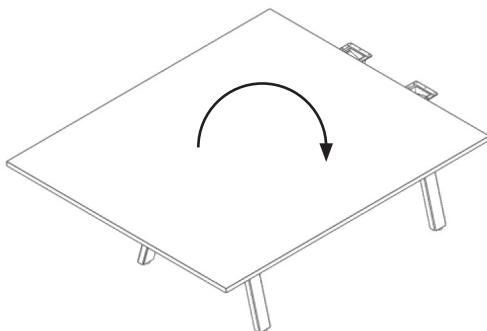
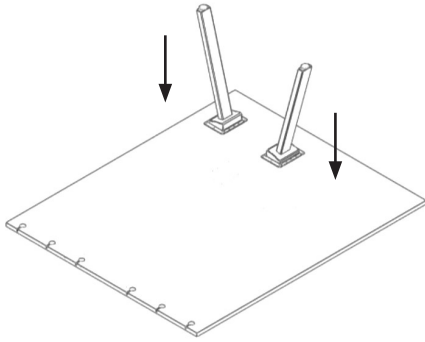


Figure 3.3



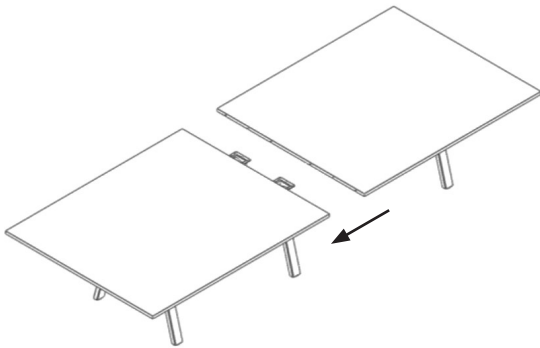
- 3 Flip the assembly upright and place the table in it's desired location.

Figure 3.4



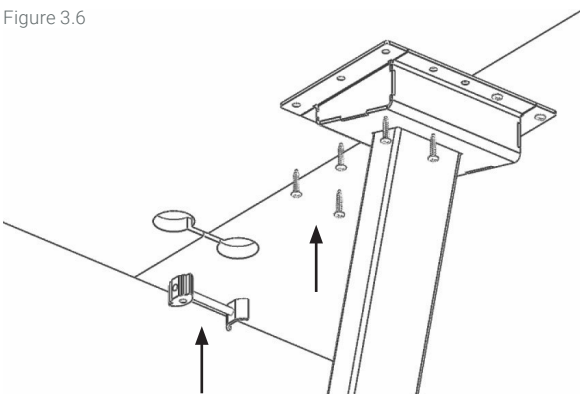
4 Repeat steps 2 & 3 to all top pieces.

Figure 3.5



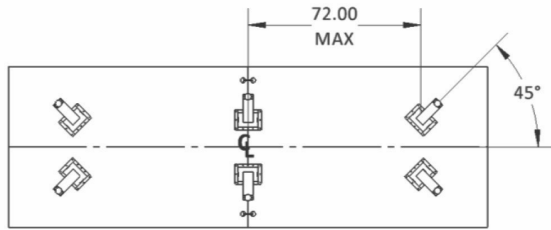
5 5. Align the preassembled tops into position.

Figure 3.6



6 Install tight joint connectors, assuring all surfaces are aligned and tight . Attach the Saw Horse Legs to the work surfaces using the predrilled holes and the provided #10 x 1" screws.

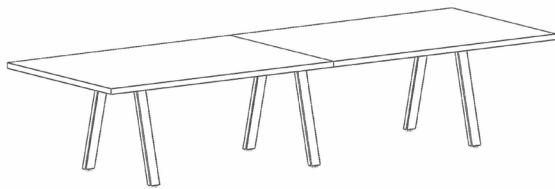
Figure 3.7



7 Alternative leg position (optional)

To add stability, maximizes leg clearance or change the table look, the outer legs may be mounted at a splayed 45 angle no more than 72in apart.

Figure 3.8



8 Assembly complete

