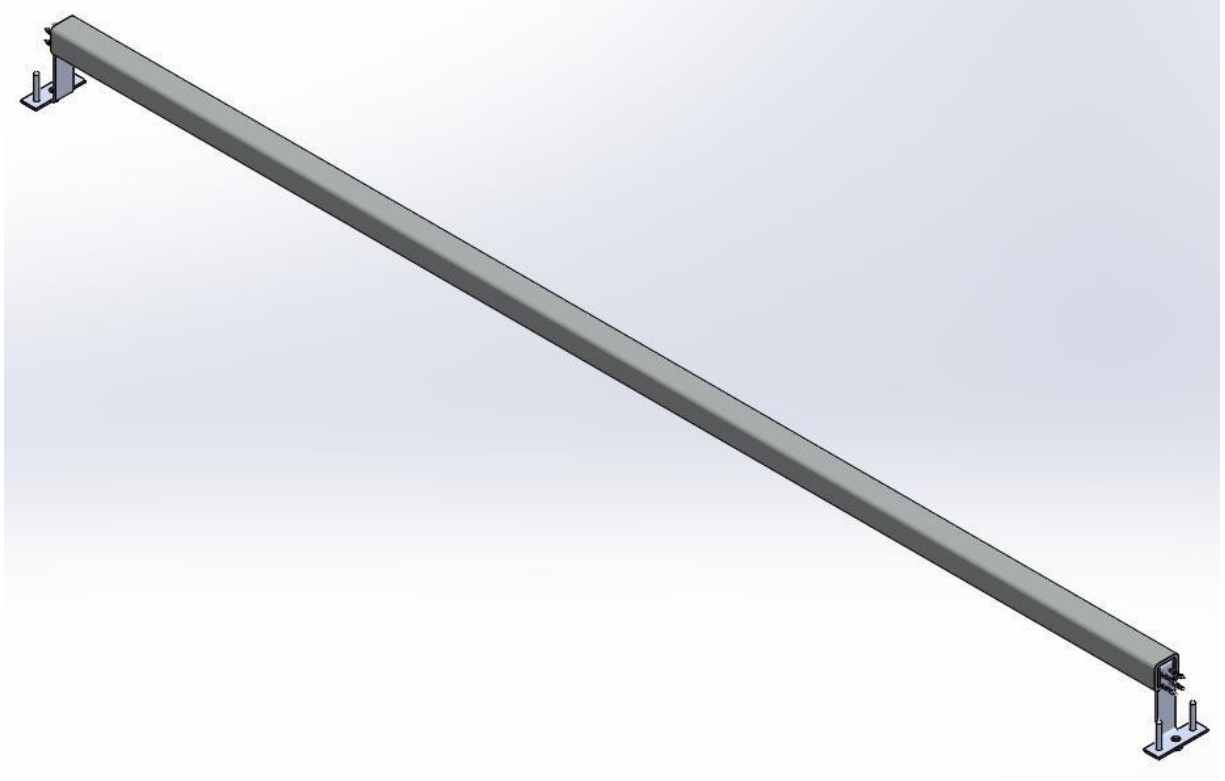


ENWORK

LANDING XNEL363672-002

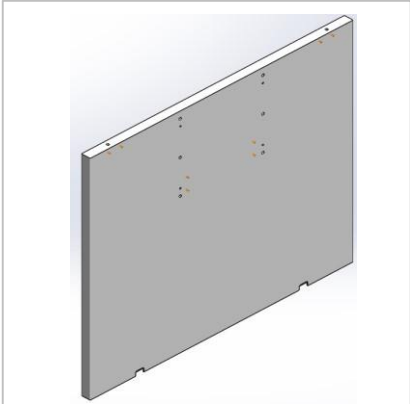
FOOTER BAR ASSEMBLY FOR CASTERS



Installation Guide

10/3/18 – REV A

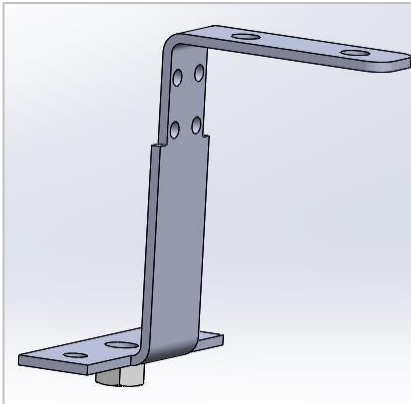
1) Parts and Fasteners Included



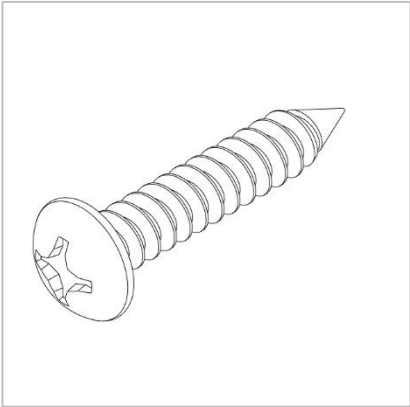
Landing End Panel



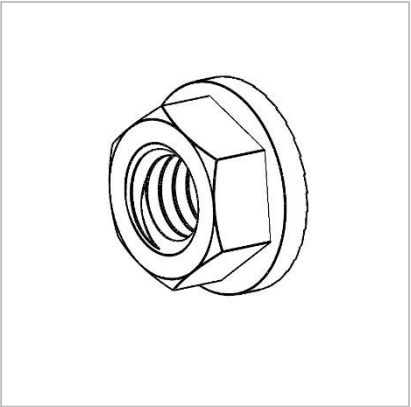
Foot Bar



Weldment Bracket



Screw 1



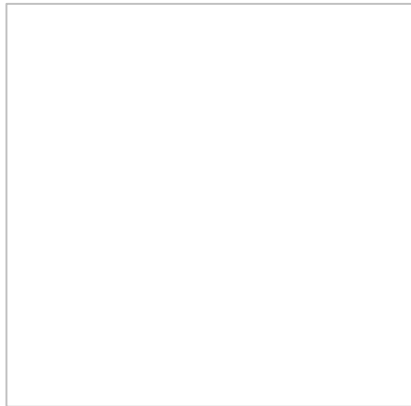
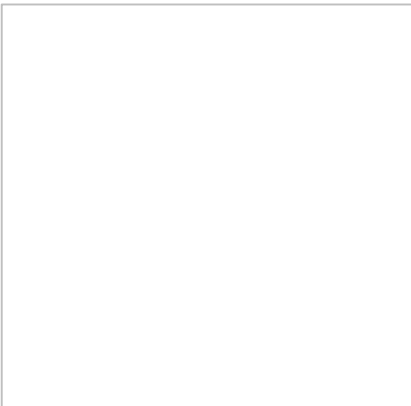
5/16-18 Serrated Flanged Nut



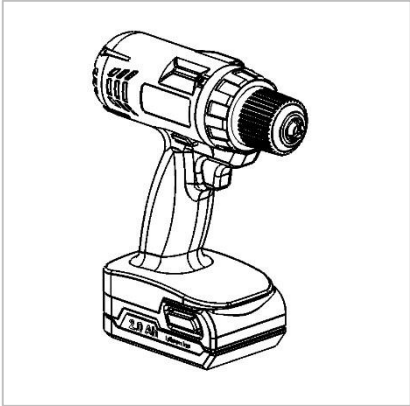
.25 x 2" Hex Head Lag



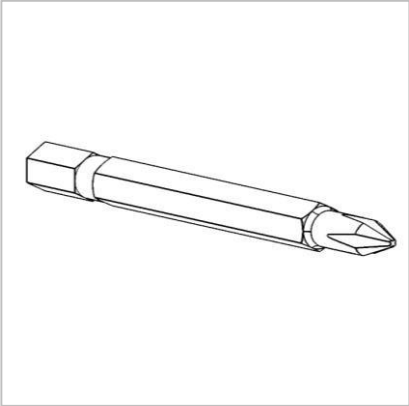
Caster



2) Tools and Supplies Required



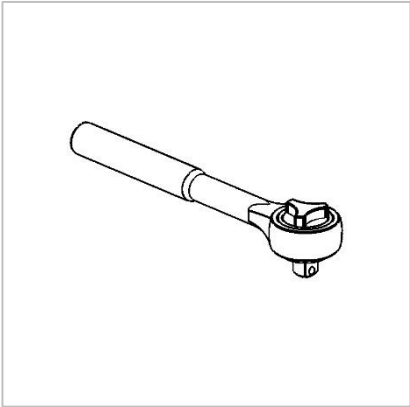
Drill



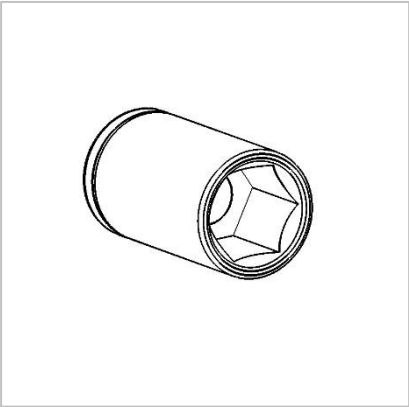
#2 Phillips Bit



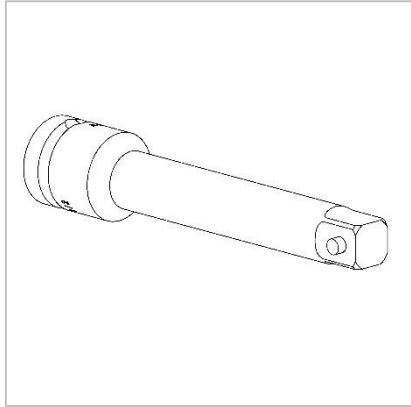
Adjustable Wrench



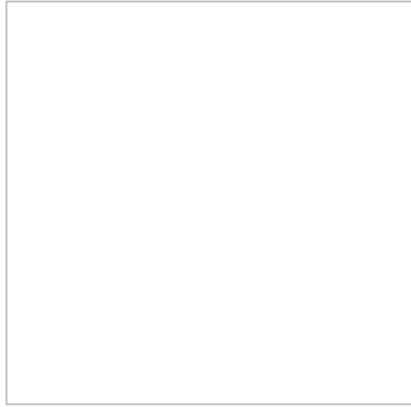
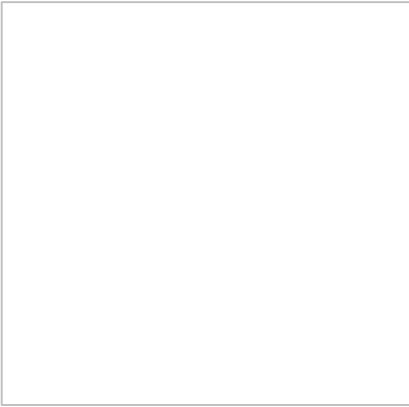
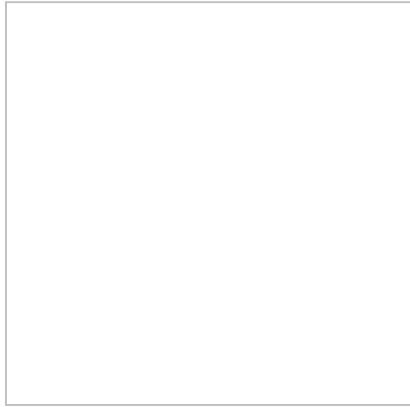
Ratchet



Socket



Socket Extension



3) Assembly Overview

1. Lay the end panel of the table down to gain access to the pockets at the bottom of the panel. (Figure 1)
2. Nest bracket in the pocket on the bottom of end panel. (Figure 2)
3. Install 2 (.25 x 2" Hex Head lag) through the two holes of bracket into the pre-dilled holes of the end panel. Next to the weld nut. (Figure 3 Circled)
4. Install 4 (screw 1) into the side of the end panel through the four holes of the bracket. (Figure 3 See arrow)
5. Install caster into nut on bracket and tighten with wrench. (Not Shown)

Note:

1. Steps 2 & 3 are repeated for second bracket. Two brackets and four lags are used in the assembly
2. Repeat this assembly for each end Figure 3 panel.

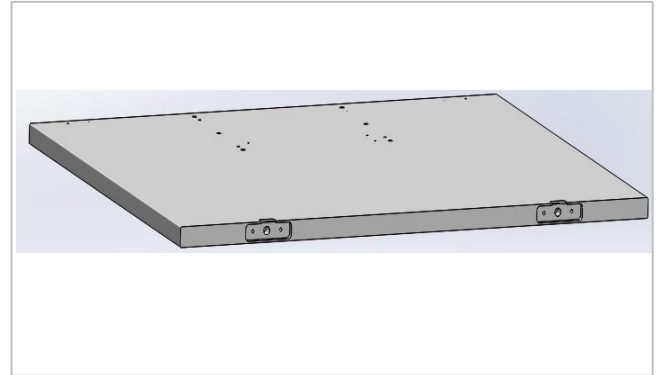


Figure 1

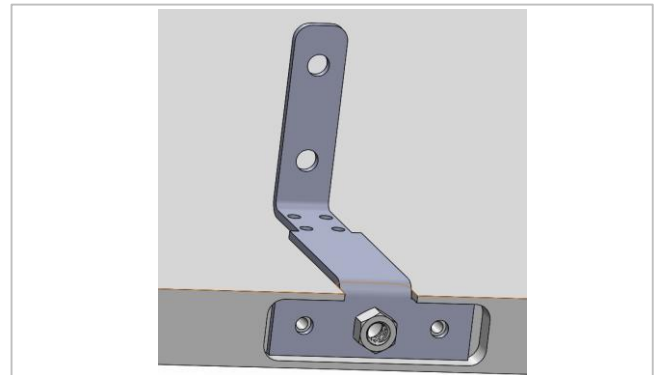
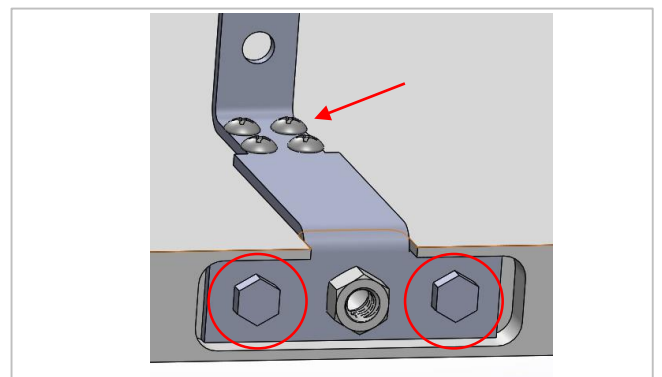


Figure 2



3) Assembly Overview

Once both end panels have two brackets lagged and screwed in and caster attached. Assembly table as standard landing. (Figure 4) Casters not shown.

Note: "L" brackets are added for strength. There are pre-drilled hole to locate brackets

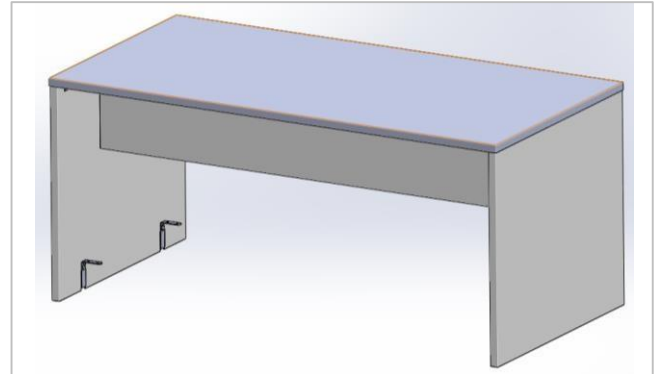


Figure 4

6. Slide footer bar between end panels down over the brackets. (Figure 5).

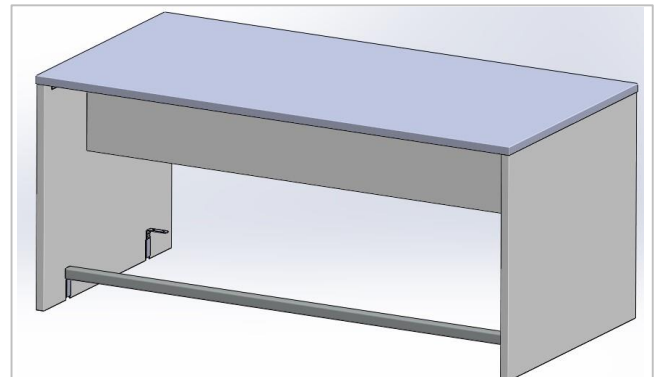


Figure 5

7. Install 5/16-18 serrated flanged nut on the underside of the bracket. 2 for each end of footer bar. (Figure 6 Circled)

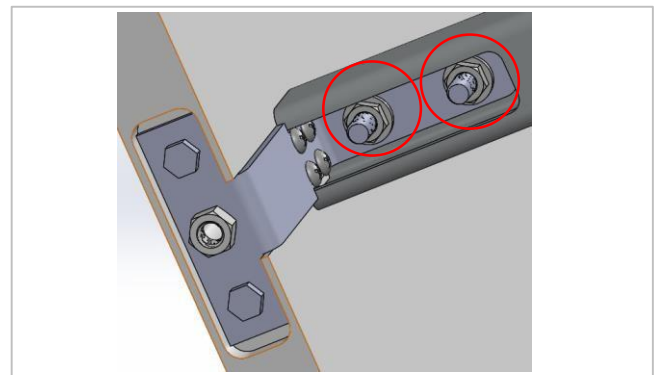


Figure 6

8. Repeat steps 6 & 7 for the other side of the table.

ENWORK

12900 Christopher Drive Lowell, MI 49331
800.815.7251 www.enwork.com

Specifications subject to change without notice.