

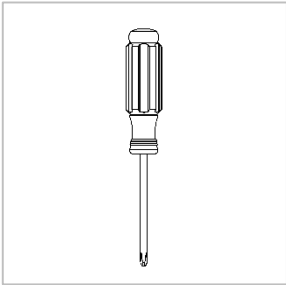
# Foundation

Base Assembly with Trough

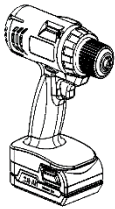


Installation Instructions

### Tools and Supplies Required



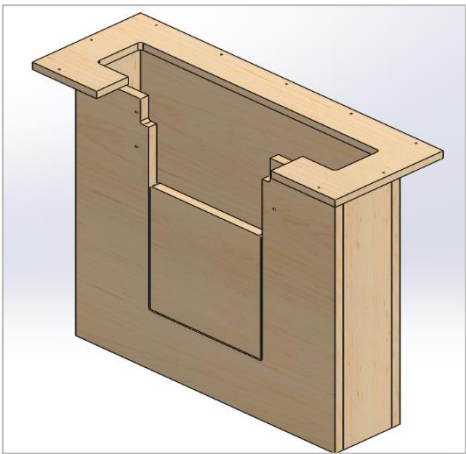
Phillips Head Screwdriver



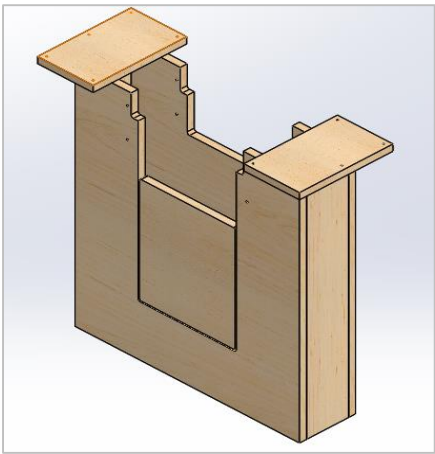
Cordless Drill



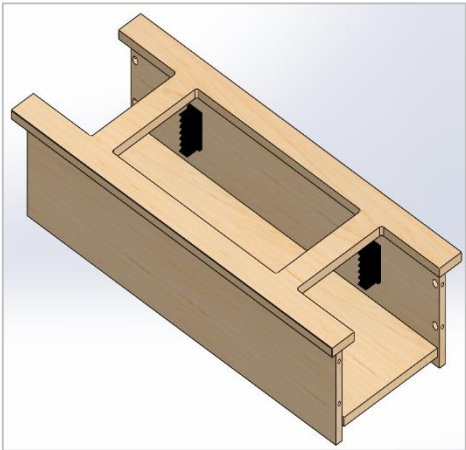
Phillips Driver Bit



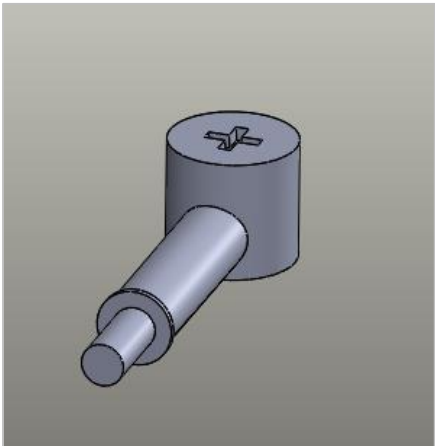
End Base



Mid Base (Multi-piece Tops Only)



Trough



Cam/Dowel

# Typical Configurations

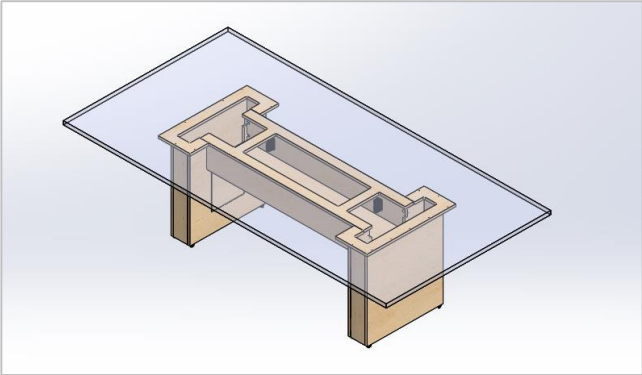


Figure 1

Rectangular Top  
2-Base

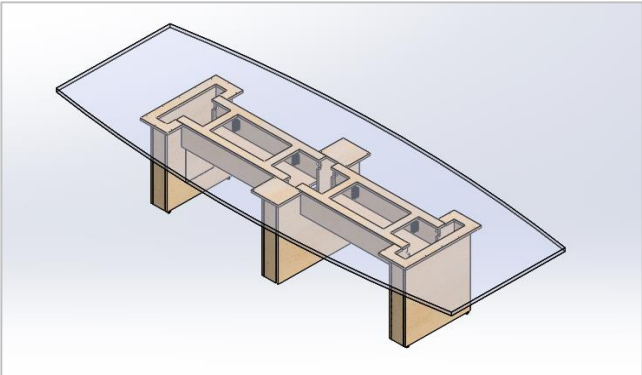


Figure 2

Boat Top  
3-Base

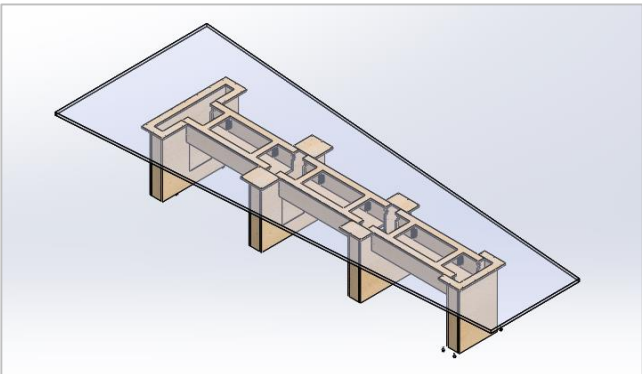


Figure 3

Wedge Top  
4-Base

## Assembly Overview

1. Set first two bases roughly in place. (Figure 4)

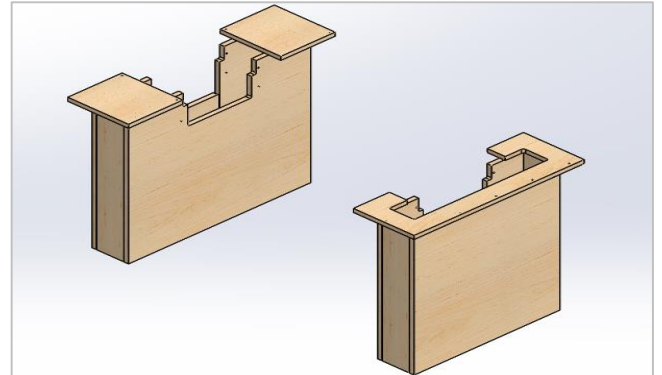


Figure 4

2. Install cam lock pins into pre-drilled holes around base cutout. Make sure the arrows on the pre-installed cams in the trough are pointed towards the ends. (Figure 5)

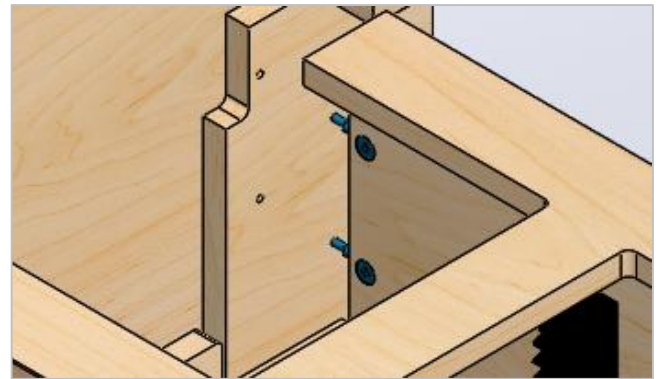


Figure 5

3. Working from one end, attach trough to bases – slide pins into holes, then rotate cam lock approximately  $\frac{1}{4}$  turn to tighten. (Figure 6) DO NOT OVER TIGHTEN.

- **Note:** The top plate on the trough sits on top of the base cutouts.

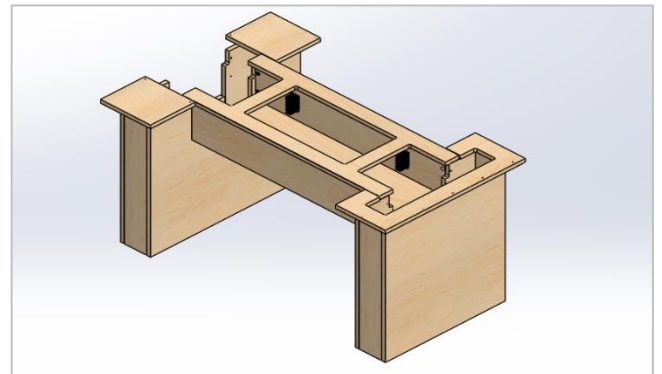


Figure 6

## Assembly Overview

4. Attach work surface using 1.5" long screws provided. Screw through base top plate pilot holes. (Figure 7) For multi-piece tops, install tight joint hardware prior to final attachment to base.

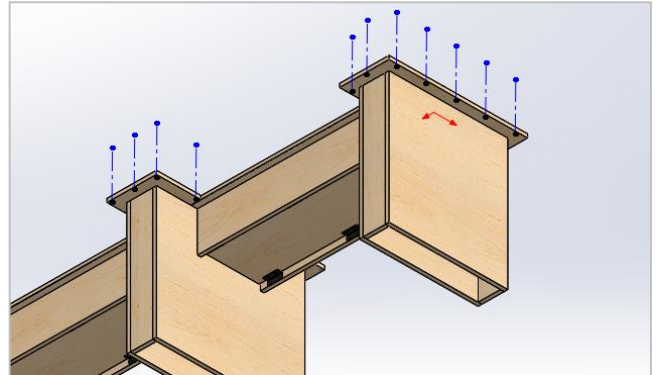


Figure 7

5. Make sure to adjust leveling of bases prior to attaching to work surface. (Figure 8)

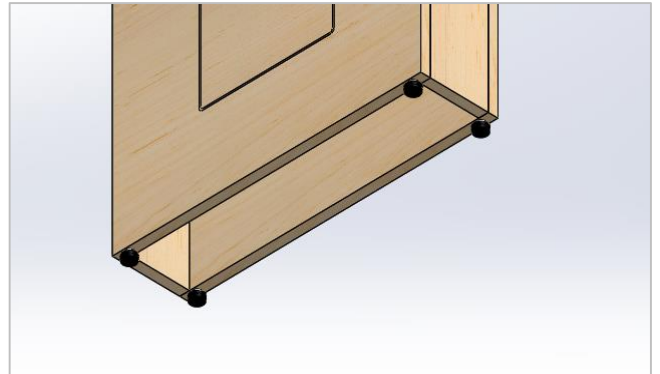


Figure 8

6. Bottom panel of trough is removable for IT access. (Figure 9)

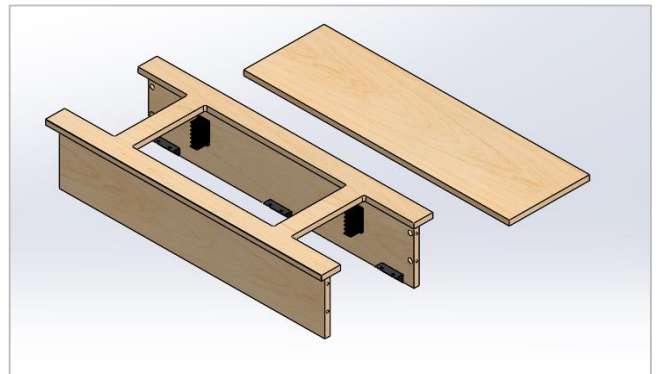


Figure 9

# ENWORK

12900 Christopher Drive Lowell, MI 49331  
800.815.7251 [www.enwork.com](http://www.enwork.com)

Specifications subject to change without notice.