

ENWORK

X T B 4 L I N K E D B E N C H I N G

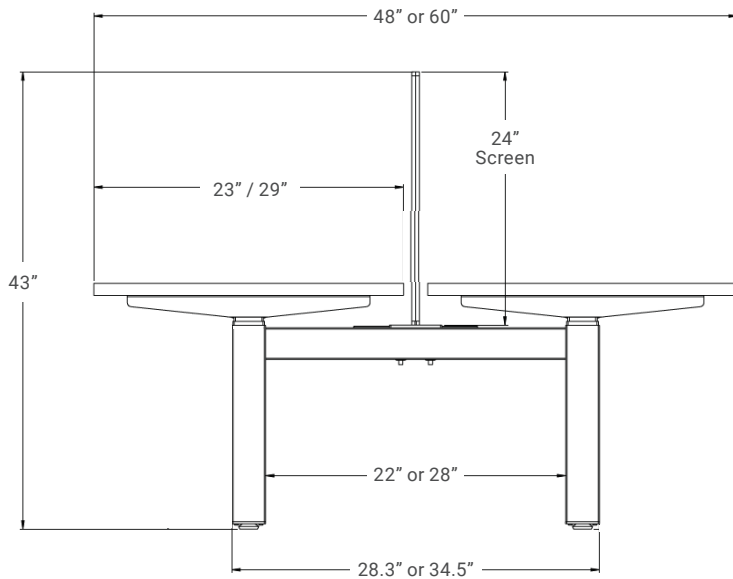


After nearly a decade offering linked benching, XT B 4 is Enwork's newest product platform. The all-new XT B 4 features integrated screen options, clutter-free wire management, and simplified part numbers to make specifying easy. Industry-leading electric bases with gyroscopic anti-collision sensor and whisper-quiet motors ensure safe and pleasant workspaces.

X T B 4 LINKED BENCHING

Specifications

- Sit-Stand electric height range of 27"-47" (including top) or ANSI/BIFMA electric height range of 23"-48" (including top)
- Single- and double-sided worksurfaces are 24" or 30"D, with adjustable crossbars to accommodate 48"-72"W worksurfaces
- 120 worksurfaces are 24"D x 24"D x 48"W x 48"W
- 220 lbs weight capacity (including top)
- Each workstation includes a 4-circuit, 8-wire power system with four receptacle openings and two data openings per user
- Standard with gyroscopic anti-collision sensors for reliable safety and protection
- 24"H fabric topper screens provide 44" overall privacy
- Worksurfaces (sold separately) available in 16 standard laminates



Sit-Stand Base (2-tube) 27" to 47"
 ANSI/BIFMA (3-tube) 23" to 48"



Double-Sided Rectangle



Single-Sided Rectangle

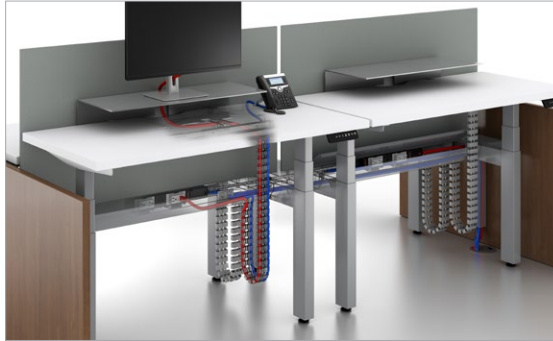
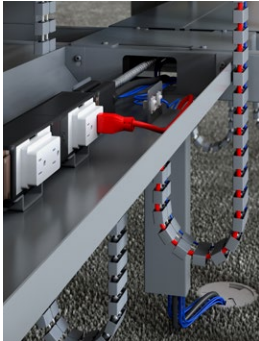


Double-Sided Extended Corner

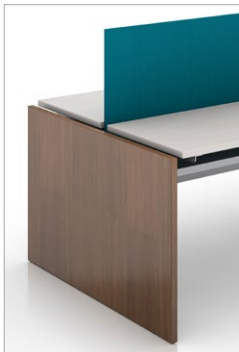


120 Degree

X T B 4 L I N K E D B E N C H I N G



Includes Cable Trough and Vertical Cable Managers to route wires beneath the worksurface.



Optional End Panels enhance aesthetic.

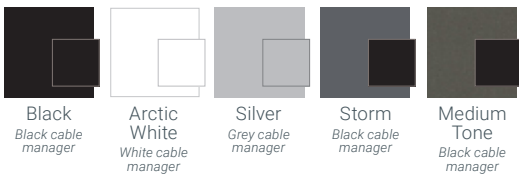


Standard up/down handset.



Optional programmable handset.

Paint options:



Black
Black cable manager

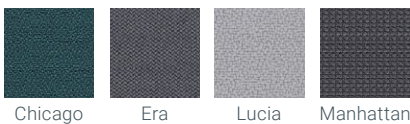
Arctic White
White cable manager

Silver
Grey cable manager

Storm
Black cable manager

Medium Tone
Black cable manager

Screen Fabric options:



Chicago

Era

Lucia

Manhattan

Additional colorways available at camirafabrics.com

1.800.815.7251
www.enwork.com

Specifications subject to change without prior notice.

Rev 05.2019