

ENWORK

RITZ FLIP TABLE



Ritz Flip Tables are designed for spaces that are always changing, from team-focused layouts to presentation formats. The modern, geometric leg design is timeless and functional, and allows tables to nest perfectly in-line.

# RITZ FLIP TABLE

World-class flip-top engineering and stability

## Product Details

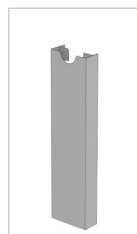
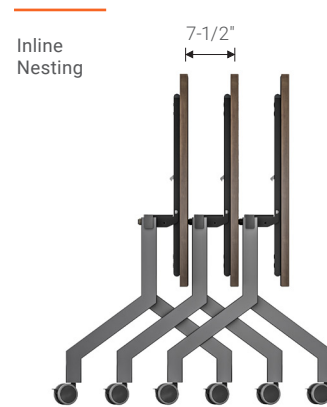
- 24" or 30" deep with 3mm or knife edge user side
- Rectangle tops as standard—other shapes available upon request
- Available in 48", 60", 72", 84", and 96" wide
- Foot is 23.5" deep
- Underside of worksurface is black laminate for easy cleaning and durability
- Top locks in both the flat and flipped positions
- Optional cable trough and vertical cable manager accessories available



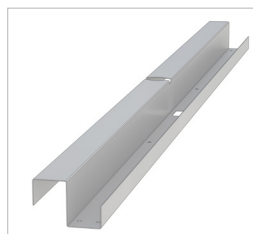
Rectangle Tops 24", 30" D  
30" - 96" W



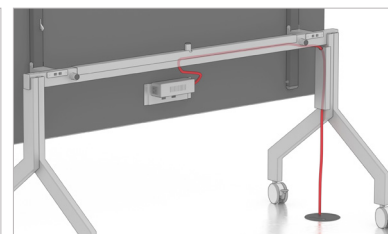
Optional Cable Routing Accessories



Vertical Cable Manager

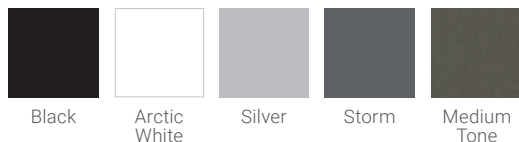


Cable Trough



Wires routed through trough & vertical manager

## Paint Options



1.800.815.7251  
[enwork.com](http://enwork.com)

Specifications are subject to change without prior notice.

Rev 09.2022