

ENWORK

RITZ FLIP TABLE

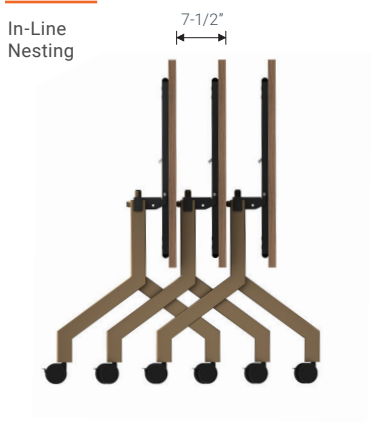


Ritz flip tables are designed for spaces that are always changing, from team-focused layouts to presentation formats. The modern, geometric leg design is timeless and functional, and it allows tables to nest perfectly in-line.

RITZ FLIP TABLE

Base Details

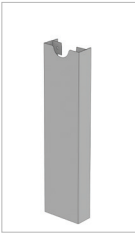
- 24" or 30" deep with 3mm or knife edge user side
- Rectangle tops as standard—other shapes available upon request
- Available 48", 60", 72", 84", and 96" wide
- Foot is 23.5" deep
- Underside of worksurface is black laminate for easy cleaning & durability
- Top locks in both the flat and flipped positions
- Optional cable trough and vertical cable manager accessories available



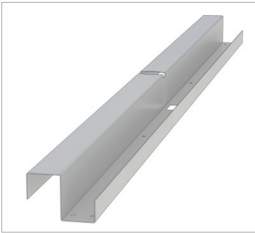
Rectangle
Tops 24", 30"D
30" - 96"W



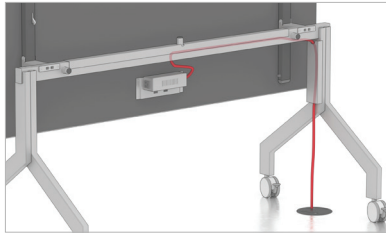
Optional Cable Routing Accessories



Vertical Cable Manager



Cable Trough



Wires routed through trough & vertical manager

Paint Options



Black Arctic White Silver Storm Medium Tone Metallic Bronze

1.800.815.7251
www.enwork.com

Specifications subject to change without prior notice.

Rev 02.2020