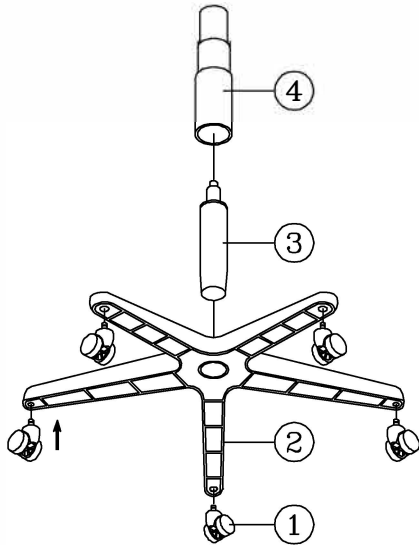


ENWORK ASSEMBLY INSTRUCTIONS

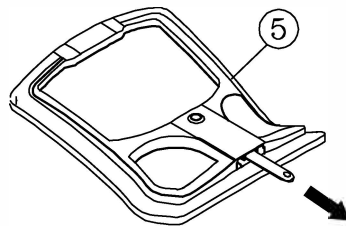
PARTS LIST

KEY QTY DESCRIPTION	KEY QTY DESCRIPTION	KEY QTY DESCRIPTION
1 5 Caster	7 1 Backrest Screw	12 2 Armrest Bracket
2 1 Base	8 1 Seat	13 1 Back Post Bellow
3 1 Seat Post	9 1 Mechanism	14 2 Back Post Bellow Screw
4 1 Seat Post Cover	10 2 Armrest	15 3 Mechanism Bracket Screw + Washer
5 1 Backrest	11 2 Arm Width Adjustment Knob + Washers	16 1 M5 Size Allen Wrench
6 1 Backrest Post		

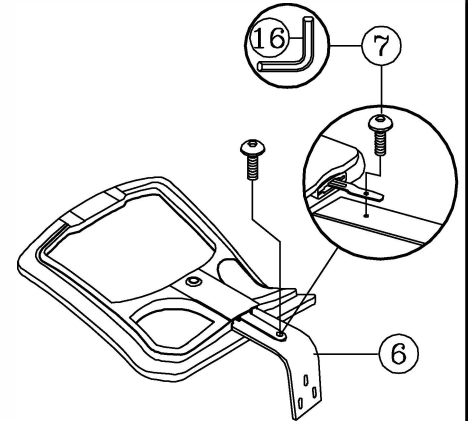
STEP 1.



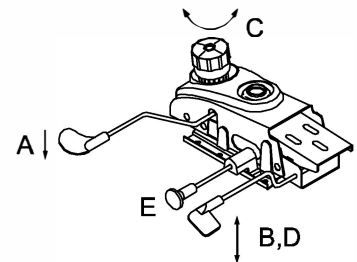
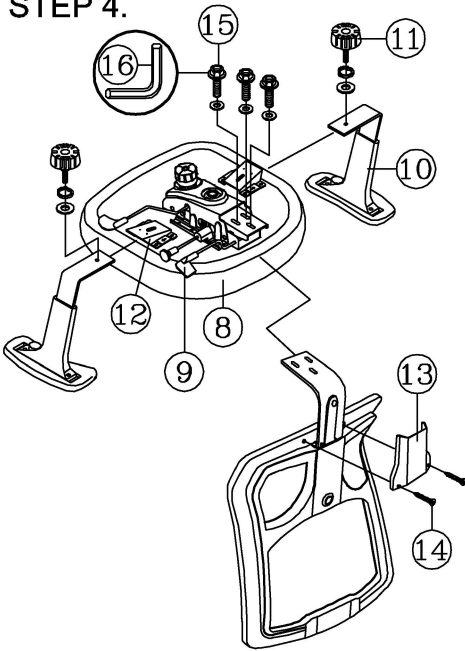
STEP 2.



STEP 3.



STEP 4.



MECHANISM INSTRUCTIONS :

- (A) **SEAT HEIGHT ADJUSTMENT :**
Pull lever up and downward.
Release lever when desired position is reached.
- (B) **BACK TILT ADJUSTMENT :**
Turn the lever up, move backrest to tilt.
To lock in position, turn lever down.
- (C) **TILT TENSION ADJUSTMENT KNOB :**
Rotate knob clockwise / counterclockwise to
adjust tilt tension based on body weight.
- (D) **TILT LOCK**
Lock and releases switch of synchronized
tilt with 3-position stop.
- (E) Pull handle bar out, allows seat to slide
forward and backward. Release handle bar to
lock desired seat position.

ATTENTION

1. THIS ASSEMBLY INSTRUCTION IS ONLY FOR ASSEMBLING THE CHAIR. THE CHAIR DRAWING MAY BE DIFFERENT FROM CHAIR APPEARANCE.
2. SOME SCREWS MAY PREASSEMBLED , ASSEMBLERS CAN IGNORE THE STEP.
3. REMOVE ALL ITEMS FROM THE CARTON. VERIFY ALL PIECES BEFORE ASSEMBLY.

PREVENTIVE MAINTENANCE AND WARNING!

- IF ANY PARTS ARE MISSING, BROKEN, DAMAGED OR WORN, STOP USE OF THE PRODUCT UNTIL REPAIRS ARE MADE USING FACTORY AUTHORIZED PARTS.
- DISPOSE OF PACKAGING PROPERLY.
- FAILURE TO FOLLOW THESE WARNINGS COULD RESULT IN SERIOUS INJURY.
- EVERY SIX MONTHS, PLEASE MAKE SURE ALL BOLTS, SCREWS AND KNOBS ARE FULLY TIGHTENED TO ENSURE STABILITY.