
ENWORK

www.enwork.com

Manhattan



Task seating

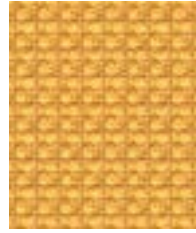


Panels

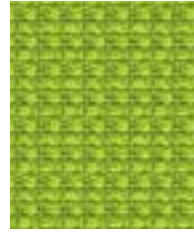
by **camira**



Murphy
YI110



Taxi
YI435



Park
YI188



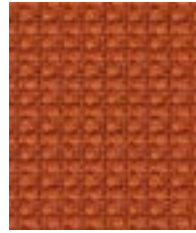
Lexington
YI113



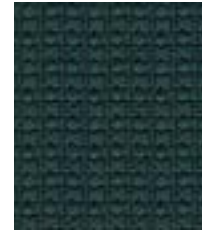
Ellis
YI365



Leroy
YI160



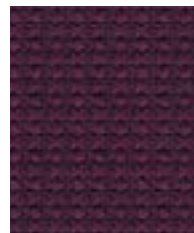
Houston
YI380



Penn
YI384



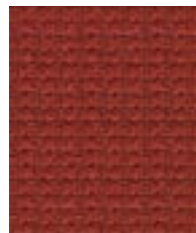
Hudson
YI362



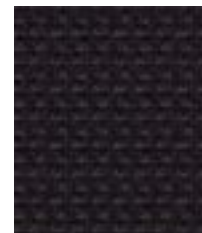
Sheridan
YI204



Monroe
YI106



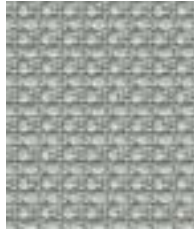
Soho
YI381



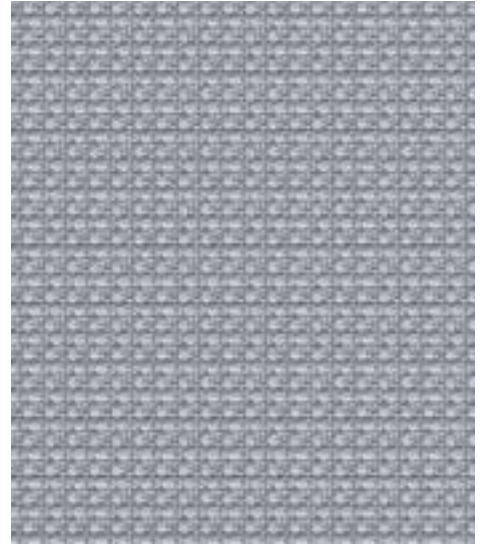
Capital
YI086



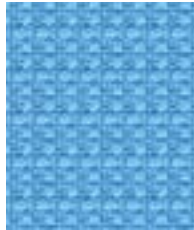
Bronx
YI364



Jackson
YI385



Varick
YI173



Watts
YI157



Saks
YI389



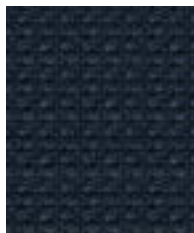
Broadway
YI363



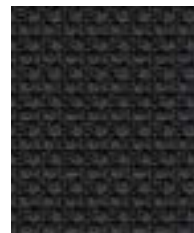
Astor
YI361



Staten
YI386



Rubin
YI026



Chrysler
YI390



Macys
YI009

Manhattan - Product information

Manhattan is a dobby weave fabric with a modern, geometric texture mimicking the architectural grid system within an urban cityscape. Made from 100% post-industrial recycled polyester, the fabric has in-built stretch for ease of upholstery. The bright, bold color palette follows the color blocking trend in fashion.

Manhattan meets the ACT voluntary Performance Guidelines and is classified for Heavy Duty Upholstery.

Contact

Enwork:	800.815.7251
Customer Service:	info@enwork.com
Quotes:	designteam@enwork.com
Samples:	www.camirafabrics.com
www.enwork.com	



Technical information

Composition

100% Recycled Polyester. Non metallic dyestuffs.

Environmental

Certified to the EU Ecolabel
Made from 100% recycled polyester

Width

54 inches minimum

Weight

8^{1/2} oz/sq yd ±5% (12^{3/4} oz/running yd ±5%)

Abrasion Resistance*

ASTM D4157 Wyzenbeek method, Heavy Duty Upholstery
Independently certified to ≥100,000 double rubs

Flammability

California Technical Bulletin 117 - 2013
NFPA 260 + UFAC Class 1
BS 7176 Low Hazard
ASTM E84 Class 2 or B (Adhered)
ASTM E84 Class 1 or A (Un-adhered)
Note: Flammability performance is dependent on components used.

Color Fastness to Light

AATCC-16 (40 hours) Class 4

Color Fastness to Crocking

AATCC-8 (Dry: 4 minimum, Wet: 3 minimum)

Cleaning

W/S
Clean with a water-based cleaning agent or solvent: Depending on the stain, you can use a dry-cleaning solvent, the foam of a mild detergent, or upholstery shampoo.

*Camira recognizes that the number of Wyzenbeek double rubs does not reflect the actual wear performance of fabrics. This product is externally certified, details of which are on our website and available from our customer services team.

Multiple factors affect fabric durability and appearance retention, including end-user application and correct maintenance. Results above 100,000 double rubs have not been shown to be a reliable indicator of increased fabric lifespan.

Batch to batch variations in shade may occur within commercial tolerances. We reserve the right to alter technical specifications without notice. The Unregistered Design Rights and the Copyright in all designs are the exclusive property of Camira Fabrics Limited.