
ENWORK

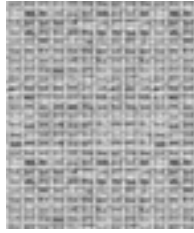
www.enwork.com

Gravity



Task seating

by **camira**



Frost
CPC32



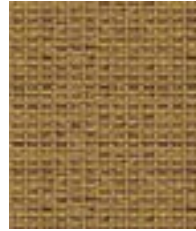
Sunny
CPC20



Almond
CPC10



Wheat
CPC21



Mustard
CPC14



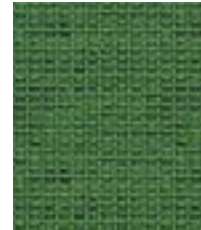
Gooseberry
CPC07



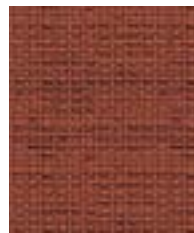
Nutmeg
CPC12



Copper
CPC22



Fresh
CPC23



Tigerlily
CPC11



Evergreen
CPC08



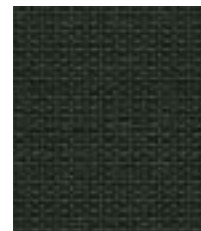
Chocolate
CPC24



Rose
CPC13



Tulip
CPC25



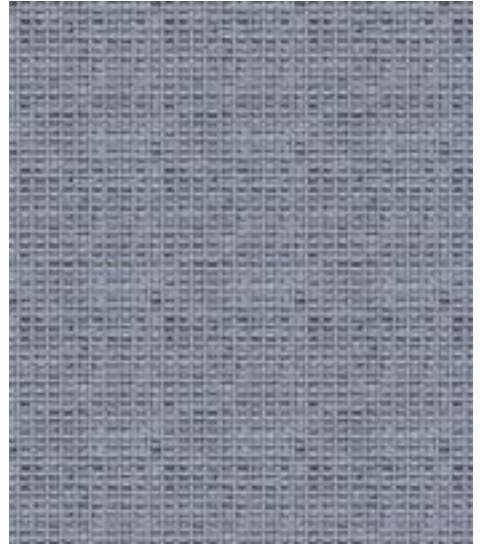
Military
CPC26



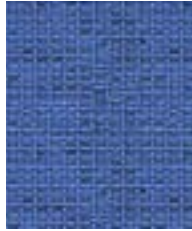
Lake
CPC09



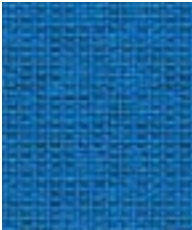
Frozen
CPC27



Dove
CPC17



Dewdrop
CPC05



Aqua
CPC28



Ice
CPC15



Petal
CPC01



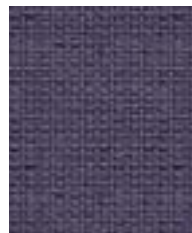
Slate
CPC16



Botanic
CPC06



Brook
CPC04



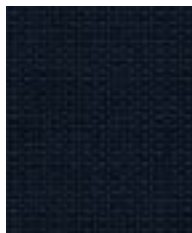
Lavender
CPC02



Gravel
CPC18



Lagoon
CPC29



Navy Blue
CPC30



Berry
CPC03



Black
CPC31

Gravity - Product information

Gravity adds weight to seating through its attractive, geometric textured patterning. The fabric contains our innovative “closed loop” recycled polyester, which is derived from our own yarn and selvage waste, upcycled into yarn, then dobby woven and piece dyed. The end result is an intriguing, two tone upholstery fabric with subtle surface interest, style and beautiful simplicity.

Gravity meets the ACT voluntary Performance Guidelines and is classified for Heavy Duty Upholstery.

Contact

Enwork:	800.815.7251
Customer Service:	info@enwork.com
Quotes:	designteam@enwork.com
Samples:	www.camirafabrics.com

www.enwork.com



Technical information

Composition

76% Virgin Polyester, 18% Post-Industrial Polyester, 6% Closed Loop Polyester. Non metallic dyestuffs.

Environmental

Certified to OEKO-TEX® Standard 100

Width

54 inches minimum

Weight

8^{3/4} oz/sq yd ±5% (13 oz/running yd ±5%)

Abrasion Resistance*

ASTM D4157 Wyzenbeek method.

Heavy Duty Upholstery independently certified to ≥75,000 double rubs.

Flammability

California Technical Bulletin 117 - 2013

NFPA 260 + UFAC Class 1

BS 7176 Low Hazard

Note: Flammability performance is dependent on components used.

Color Fastness to Light

AATCC-16 (40 hours) Class 4

Color Fastness to Crocking

AATCC-8 (Dry: 4 minimum, Wet: 3 minimum)

Cleaning

W/S

Clean with a water-based cleaning agent or solvent: Depending on the stain, you can use a dry-cleaning solvent, the foam of a mild detergent, or upholstery shampoo.

*Camira recognizes that the number of Wyzenbeek double rubs does not reflect the actual wear performance of fabrics. This product is externally certified, details of which are on our website and available from our customer services team.

Batch to batch variations in shade may occur within commercial tolerances. We reserve the right to alter technical specifications without notice. The Unregistered Design Rights and the Copyright in all designs are the exclusive property of Camira Fabrics Limited.