
ENWORK

www.enwork.com

Era



Task seating



Panels

by **camira**



Calendar
CSE19



Futurist
CSE01



Occurrence
CSE23



Date
CSE24



Sequence
CSE25



Generation
CSE02



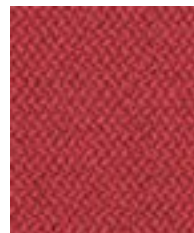
Turn
CSE26



Measure
CSE27



Phase
CSE17



Cycle
CSE06



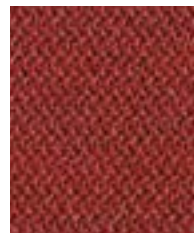
Span
CSE05



History
CSE21



Prime
CSE09



Extent
CSE28



Experience
CSE29



Transition
CSE30



Analogue
CSE33



Notation
CSE36



Splitsecond
CSE31



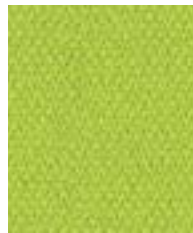
Endurance
CSE34



Aeon
CSE20



Lifetime
CSE03



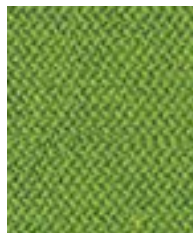
Period
CSE07



Rest
CSE37



Occasion
CSE32



Timelapse
CSE16



Everlasting
CSE10



Event
CSE18



Signature
CSE35



Stage
CSE15



Allowance
CSE38



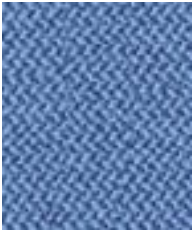
Memo
CSE46



Quota
CSE41



Youth
CSE39



Chapter
CSE08



Forecast
CSE11



Prompt
CSE45



Perennial
CSE12



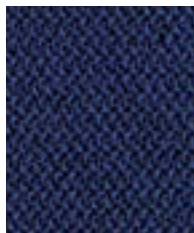
Range
CSE42



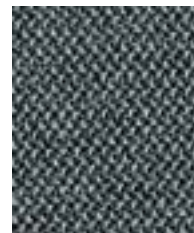
Late
CSE43



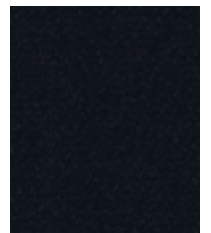
Present
CSE13



Maturity
CSE40



Elapse
CSE44



Forward
CSE14

Era - Product information

Era is a subtle, two tone polyester fabric containing stretch in both directions for ease of upholstery. The baby herringbone weave offers an understated contemporary texture while its coloring technique provides close up intrigue. The palette incorporates playful brights and sophisticated muted tones.

Era meets the ACT voluntary Performance Guidelines and is classified for Heavy Duty Upholstery.

Contact

Enwork:	800.815.7251
Customer Service:	info@enwork.com
Quotes:	designteam@enwork.com
Samples:	www.camirafabrics.com

www.enwork.com



Technical information

Composition

100% Polyester. Non metallic dyestuffs.

Environment

Certified to OEKO-TEX® Standard 100

Width

54 inches minimum

Weight

9^{1/2} oz/sq yd ±5% (14^{1/4} oz/running yd ±5%)

Abrasion Resistance*

ASTM D4157 Wyzenbeek method, Heavy Duty Upholstery
Independently certified to ≥100,000 double rubs

Flammability

California Technical Bulletin 117 - 2013
NFPA 260 + UFAC Class 1
BS 7176 Low Hazard
ASTM E84 Class 1 or A (Adhered)
ASTM E84 Class 1 or A (Un-adhered)
Note: Flammability performance is dependent on components used.

Color Fastness to Light

AATCC-16 (40 hours) Class 4

Color Fastness to Crocking

AATCC-8 (Dry: 4, Wet: 3)

Cleaning

W/S

Clean with a water-based cleaning agent or solvent: Depending on the stain, you can use a dry-cleaning solvent, the foam of a mild detergent, or upholstery shampoo.

*Camira recognizes that the number of Wyzenbeek double rubs do not reflect the actual wear performance of fabrics. This product is externally certified, details of which are on our website and available from our customer services team.

Multiple factors affect fabric durability and appearance retention, including end-user application and correct maintenance. Results above 100,000 double rubs have not been shown to be a reliable indicator of increased fabric lifespan.

Batch to batch variations in shade may occur within commercial tolerances. We reserve the right to alter technical specifications without notice. The Unregistered Design Rights and the Copyright in all designs are the exclusive property of Camira Fabrics Limited.