

ENWORK

BOXCAR STORAGE

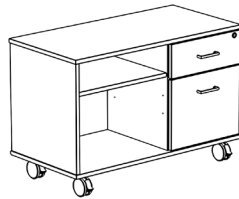
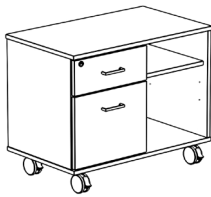


A mobile ped/bookcase combination piece, Boxcar Storage provides just the right amount of space right where you need it. Available in left-hand and right-hand configurations.

BOXCAR STORAGE

Product Details

- Slim 3/4" laminate construction, 18"D and 23.75"H
- 30" or 36" wide
- Ped/Bookcase combination available with LH or RH orientation
- Bookcase interior is 19"W
- Includes lock, adjustable shelf, and casters as standard
- Optional 2" cushion available
- Available in 15 standard finishes



Depth	18"	Widths	30" or 36"
Height	23.75"	Orientation	Left-handed (LH) or Right-handed (RH)

Pull Options



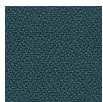
Arc



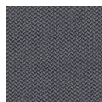
Bar

Cushion Fabric Options

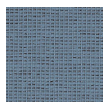
Additional colorways available at camirafabrics.com



Chicago



Era



Gravity



Haven



Manhattan

1.800.815.7251
www.enwork.com

Specifications subject to change without prior notice.

Rev 08.2019